

# BURGIN ATKINSON

& C O M P A N Y

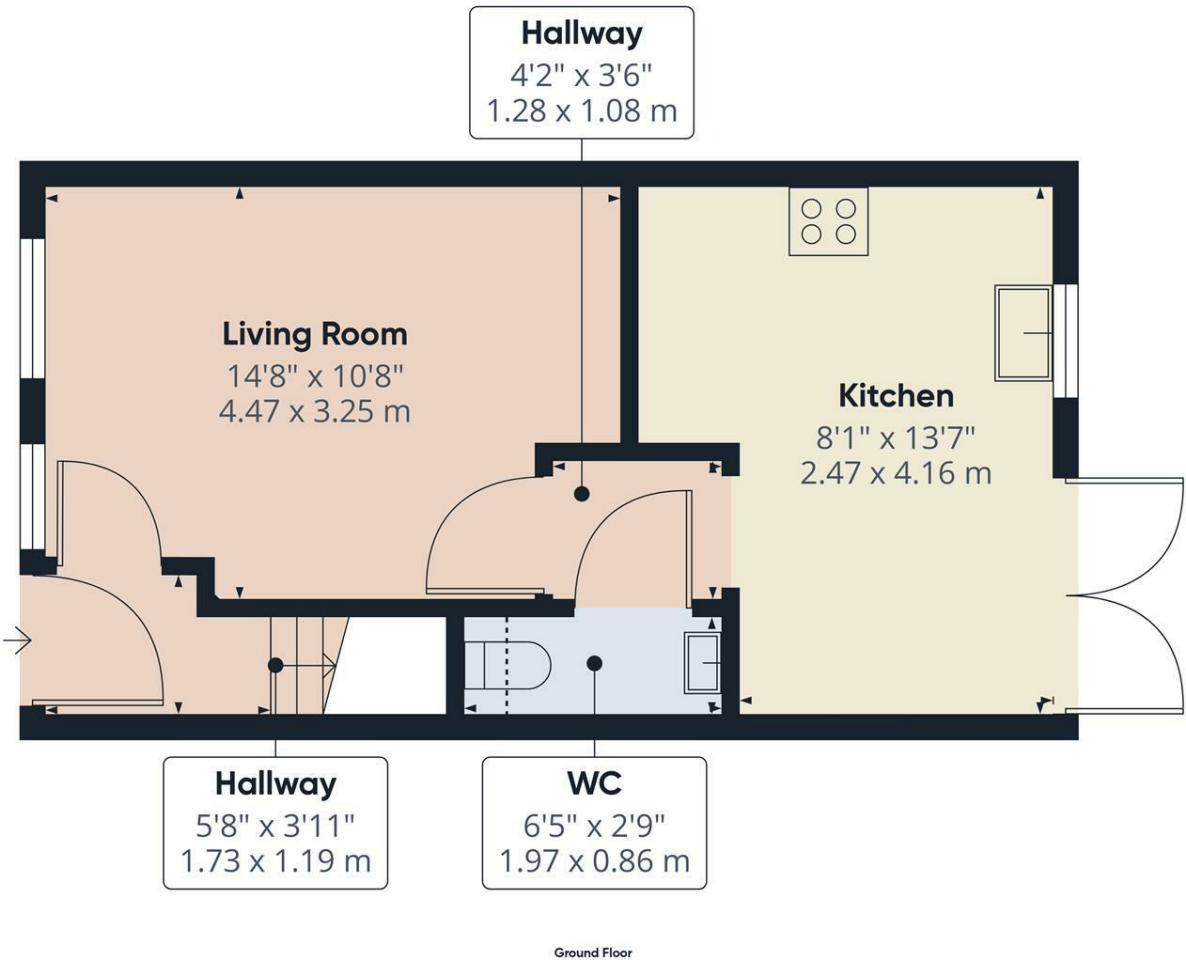


10 Elizabethan Gardens, Retford, Nottinghamshire, DN22 7WP

FANTASTIC MODERN HOME - CLOSE TO AMENITIES & SERVICES - MID TOWN HOUSE - 3 BEDROOMS - OPEN PLAN LIVING - MODERN FIXTURES & FITTINGS THROUGHOUT - CONSERVATORY - PATIO GARDEN - 2 PARKING SPACES - AVAILABLE NOW - CONTACT BURGIN ATKINSON FOR MORE INFORMATION

- Mid Town House
- 3 Bedrooms
- Open Plan Living
- Modern Kitchen & Bathroom
- Conservatory
- Patio Garden
- 2 Parking Spaces
- Close To Amenities
- Gas Central Heating & Double Glazing
- EPC Rating: TBC

**£200,000**



**Approximate total area<sup>(1)</sup>**  
342 ft<sup>2</sup>  
31.8 m<sup>2</sup>

**Reduced headroom**  
3 ft<sup>2</sup>  
0.3 m<sup>2</sup>

(1) Excluding balconies and terraces

Reduced headroom  
----- Below 5 ft/1.5 m

Calculations reference the RICS IPMS 3C standard. Measurements are approximate and not to scale. This floor plan is intended for illustration only.

GIRAFFE360

